

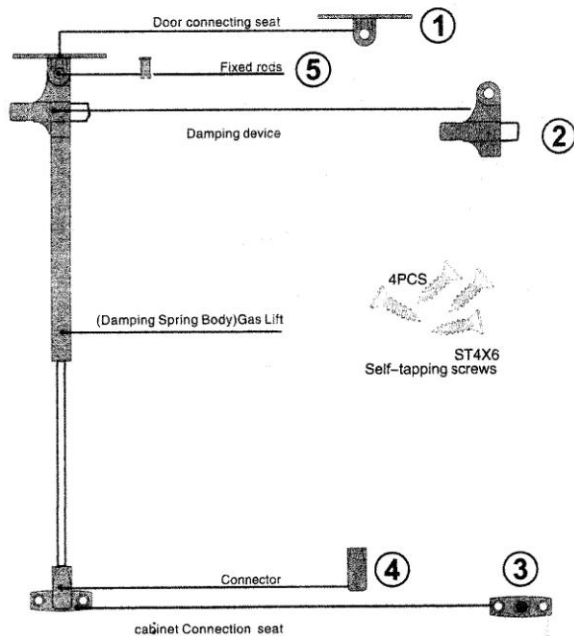
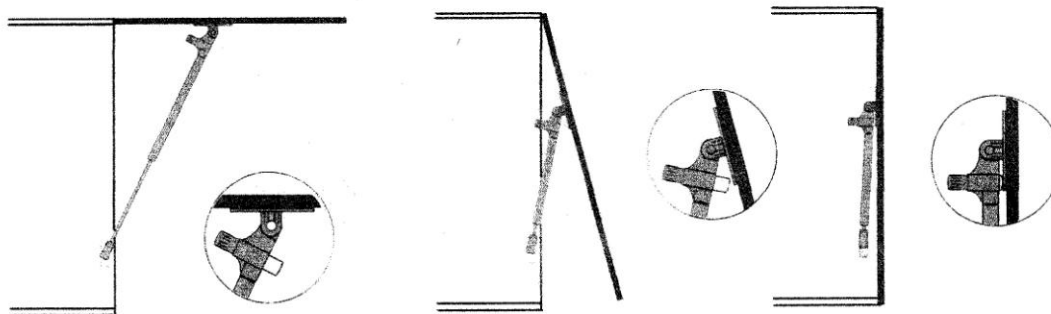
G16 DAMPING DEVICE+GAS LIFT

APPLICATION AND INSTALLATION INSTRUCTIONS

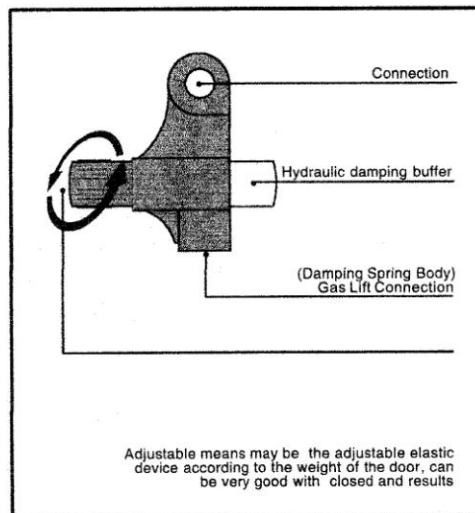
G2016052900312D

G16 There is an outstanding new products in 2016, Damping device + Gas Lift, damping Spring Body. Dedicated to the cabinet wall cabinet.

A damping device installed in Gas Lift a necessary function, can be very helpful when closing Gas Lift to reach the 0 noise state , can increase the value and life of furniture. It provides the user with more convenience and comfort.



Note: recommended to use without spring normal hinge



Adjustable means may be the adjustable elastic device according to the weight of the door, can be very good with closed and results

The company owns the copyright to this product,
and has a manual content copyright,
imitation reserved!

